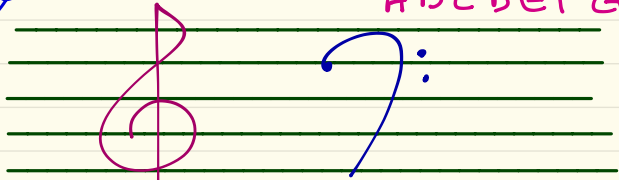


Band Test Review

Staff
5 lines + 4 spaces

Music Alphabet:
A B C D E F G

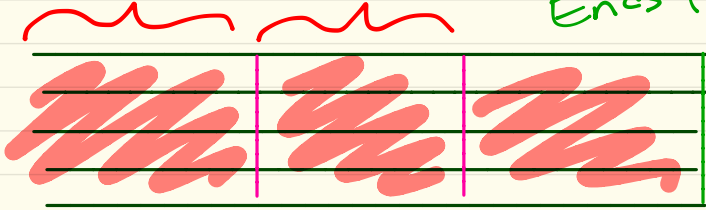


Treble or G
Clef

Bass or F
Clef

Measure -
Space between 2 bar lines

Double Bar line
Ends the Staff



Bar lines
divide the staff into measures



Name Whole Note

Half Note

Quarter Note

Beats

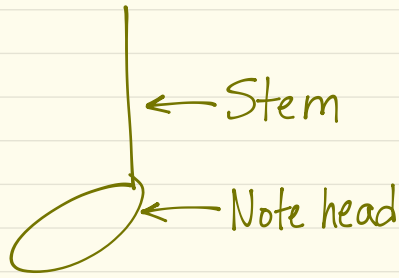
4

2

1

Rest





If the note is on or above the third line, the stem goes down on the left.



If the note is below the third line, the stem goes up on the right.

