

Bassoon

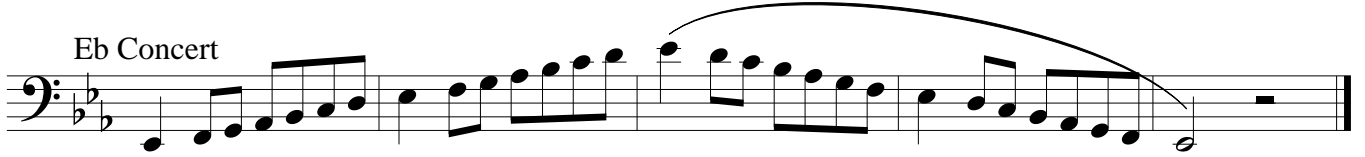
Region Band Scales

Region XIII - Fort Bend ISD

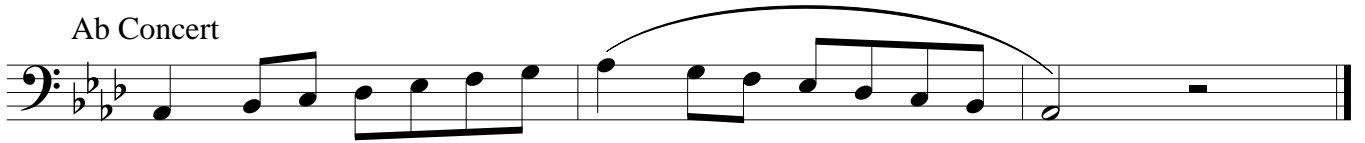
Bb Concert



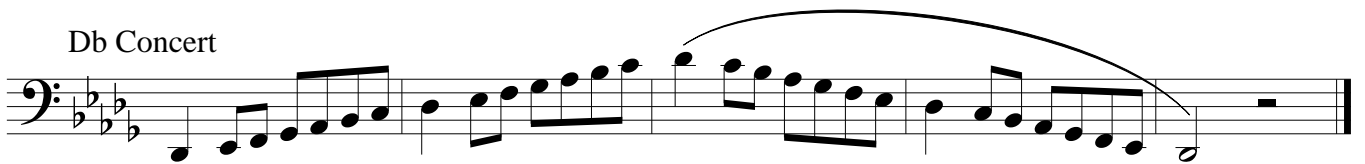
Eb Concert



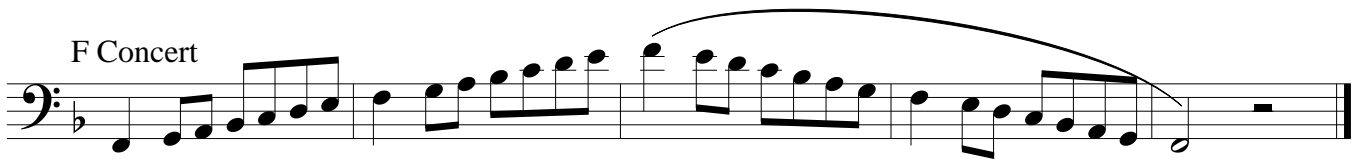
Ab Concert



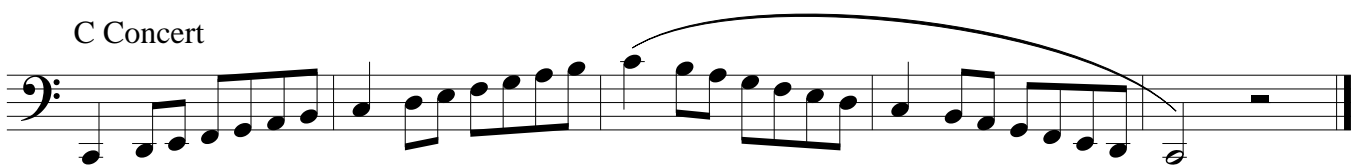
Db Concert



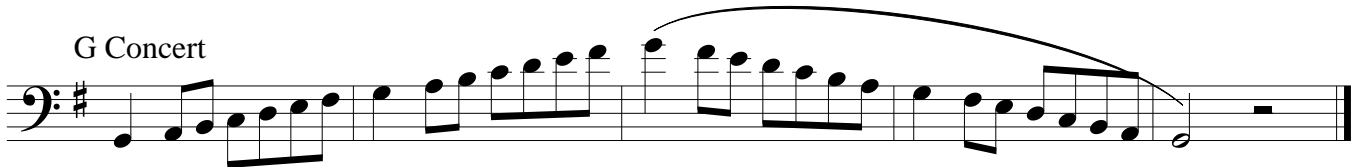
F Concert



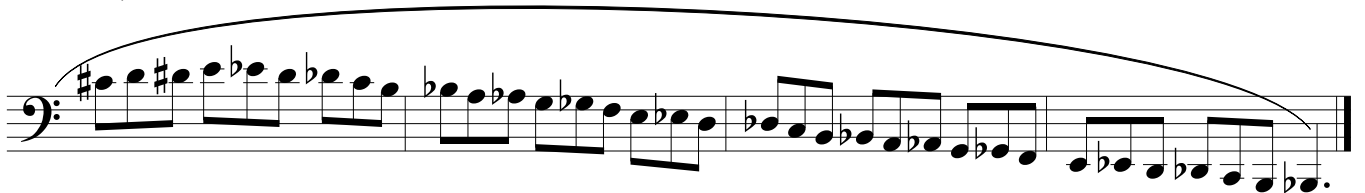
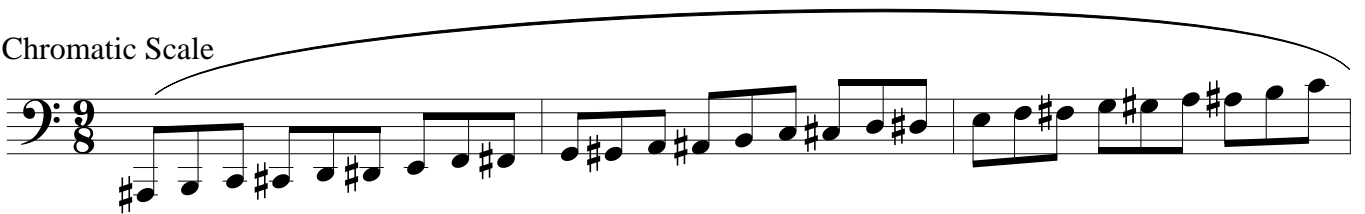
C Concert



G Concert



Chromatic Scale

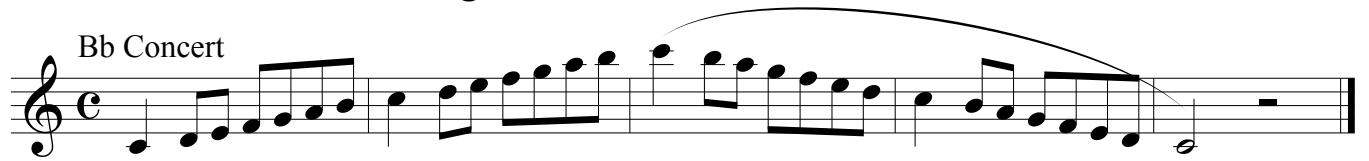


Clarinet

Region Band Scales

Region XIII - Fort Bend ISD

Bb Concert



A musical staff in treble clef with a common time signature (C). The scale starts on Bb and ascends through B, C, D, E, F, G, A, Bb, ending with a whole rest. A slur covers the entire scale.

Eb Concert



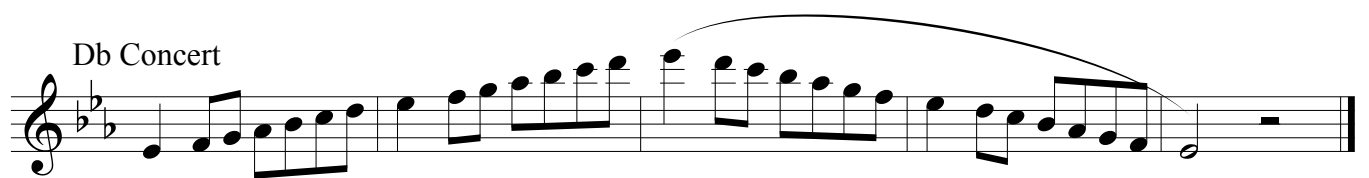
A musical staff in treble clef with a B-flat key signature (two flats). The scale starts on Eb and ascends through E, F, G, A, Bb, C, D, Eb, ending with a whole rest. A slur covers the entire scale.

Ab Concert



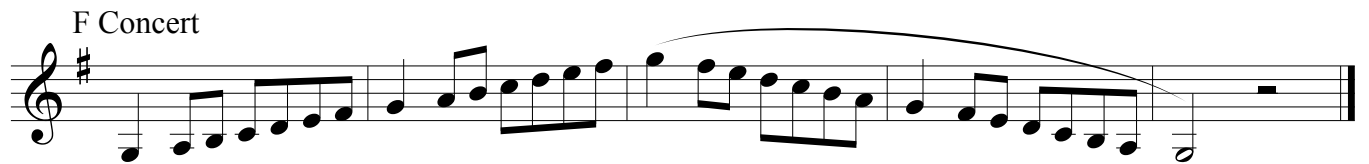
A musical staff in treble clef with a B-flat key signature (three flats). The scale starts on Ab and ascends through A, Bb, C, D, Eb, F, G, Ab, ending with a whole rest. A slur covers the entire scale.

Db Concert



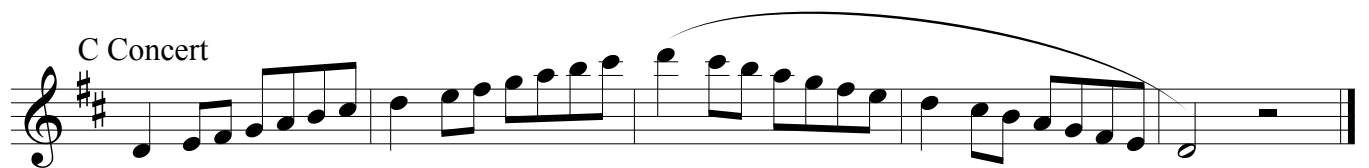
A musical staff in treble clef with a B-flat key signature (four flats). The scale starts on Db and ascends through D, Eb, F, G, Ab, Bb, C, Db, ending with a whole rest. A slur covers the entire scale.

F Concert



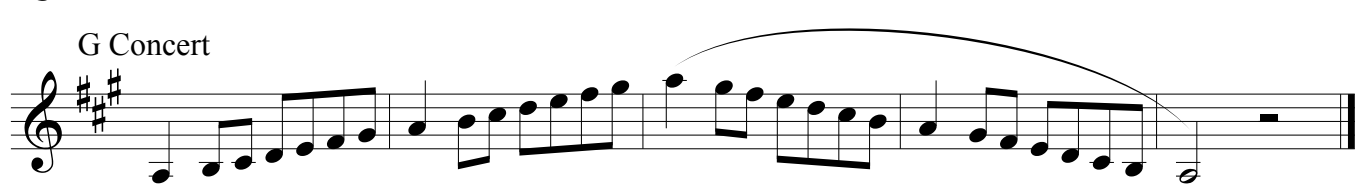
A musical staff in treble clef with a C major key signature (one sharp). The scale starts on F and ascends through G, A, Bb, C, D, E, F, ending with a whole rest. A slur covers the entire scale.

C Concert



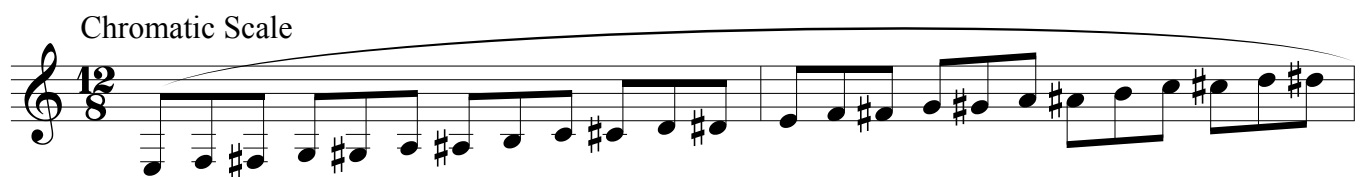
A musical staff in treble clef with a C major key signature (two sharps). The scale starts on C and ascends through D, E, F, G, A, B, C, ending with a whole rest. A slur covers the entire scale.

G Concert

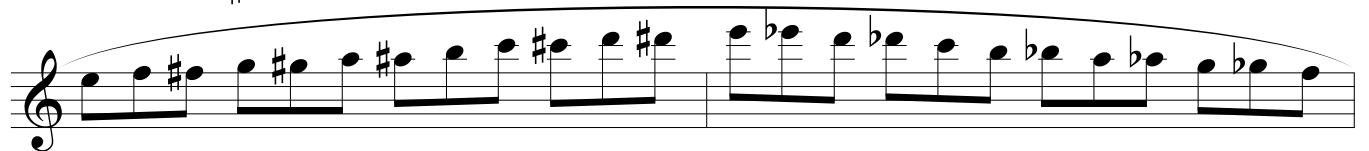


A musical staff in treble clef with a C major key signature (three sharps). The scale starts on G and ascends through A, B, C, D, E, F, G, ending with a whole rest. A slur covers the entire scale.

Chromatic Scale



A musical staff in treble clef with a 12/8 time signature. The scale starts on C and ascends chromatically through all 12 notes of the octave, ending with a whole rest. A slur covers the entire scale.



A musical staff in treble clef showing the continuation of the chromatic scale from the previous staff, starting on C and ascending through all 12 notes of the octave, ending with a whole rest. A slur covers the entire scale.



A musical staff in treble clef showing the continuation of the chromatic scale from the previous staff, starting on C and ascending through all 12 notes of the octave, ending with a whole rest. A slur covers the entire scale.

Region Band Scales

Region XIII - Fort Bend ISD

The image displays a musical score for Bass Clarinet, featuring eight staves of music. Each staff is labeled with its respective scale name and key signature. The scales are: Bb Concert (one flat), Eb Concert (three flats), Ab Concert (four flats), Db Concert (five flats), F Concert (one sharp), C Concert (two sharps), and G Concert (three sharps). The Chromatic Scale is shown in two parts: the first part is in 12/8 time and covers the full chromatic range from Bb to B; the second part covers the chromatic range from B to Bb. Each scale is written in a single melodic line with a treble clef and a common time signature (C) for the concert scales, and a 12/8 time signature for the chromatic scale. The notes are connected by a long slur, indicating a continuous scale run.

Bb Concert

E♭ Concert

A♭ Concert

D♭ Concert

F Concert

C Concert

G Concert

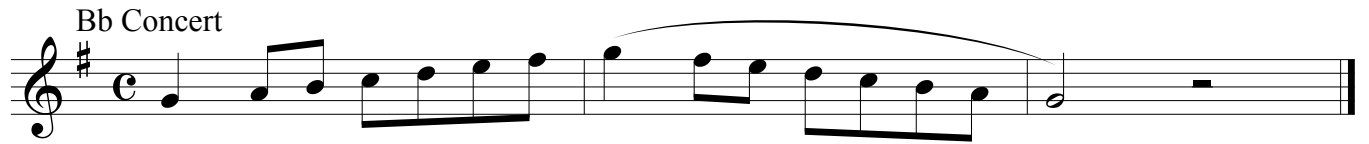
Chromatic Scale

Alto Sax

Region Band Scales

Region XIII - Fort Bend ISD

Bb Concert



A musical staff in treble clef with a key signature of two flats (Bb) and a common time signature (C). The scale starts on Bb and ascends to G, then descends back to Bb. The notes are: Bb, B, C, C#, D, Eb, E, F, F#, G. The scale is written in a single line with a slur over the entire range.

Eb Concert



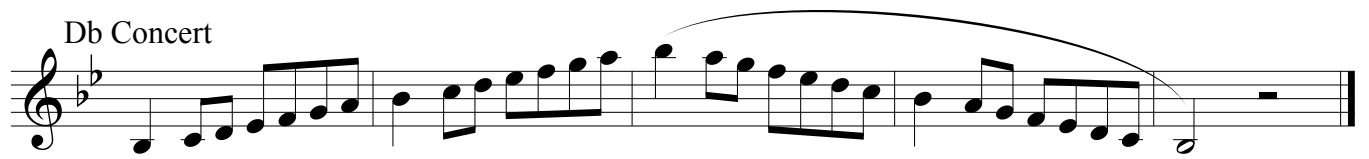
A musical staff in treble clef with a key signature of three flats (Eb) and a common time signature (C). The scale starts on Eb and ascends to D, then descends back to Eb. The notes are: Eb, E, F, F#, G, Ab, A, Bb, B, C. The scale is written in a single line with a slur over the entire range.

Ab Concert



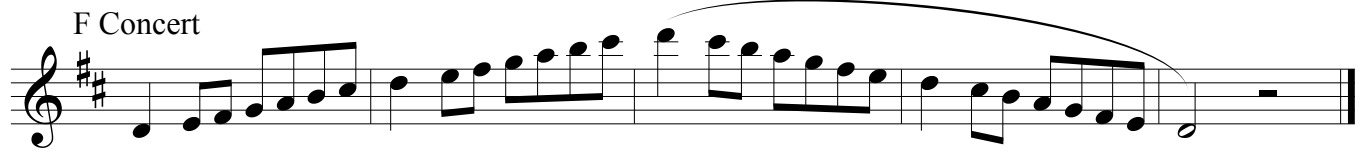
A musical staff in treble clef with a key signature of four flats (Ab) and a common time signature (C). The scale starts on Ab and ascends to G, then descends back to Ab. The notes are: Ab, A, Bb, B, C, C#, D, Eb, E, F, F#, G. The scale is written in a single line with a slur over the entire range.

Db Concert



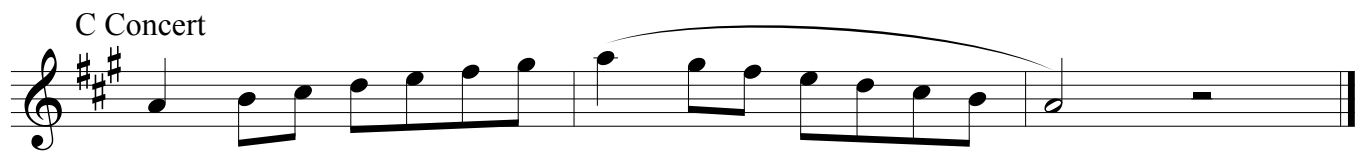
A musical staff in treble clef with a key signature of five flats (Db) and a common time signature (C). The scale starts on Db and ascends to C, then descends back to Db. The notes are: Db, D, Eb, E, F, F#, G, Ab, A, Bb, B, C. The scale is written in a single line with a slur over the entire range.

F Concert



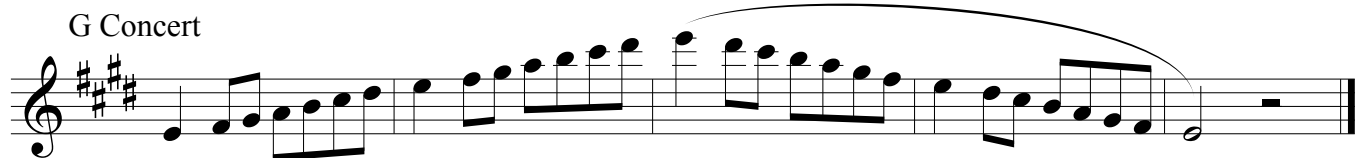
A musical staff in treble clef with a key signature of one sharp (F) and a common time signature (C). The scale starts on F and ascends to E, then descends back to F. The notes are: F, F#, G, Ab, A, Bb, B, C, C#, D, Eb, E, F. The scale is written in a single line with a slur over the entire range.

C Concert



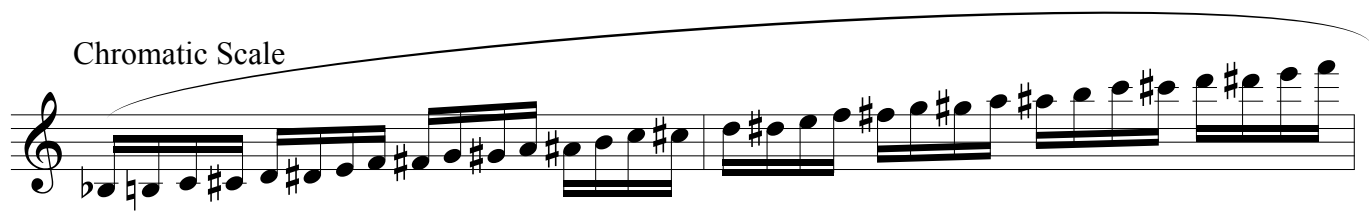
A musical staff in treble clef with a key signature of two sharps (C) and a common time signature (C). The scale starts on C and ascends to B, then descends back to C. The notes are: C, C#, D, Eb, E, F, F#, G, Ab, A, Bb, B, C. The scale is written in a single line with a slur over the entire range.

G Concert

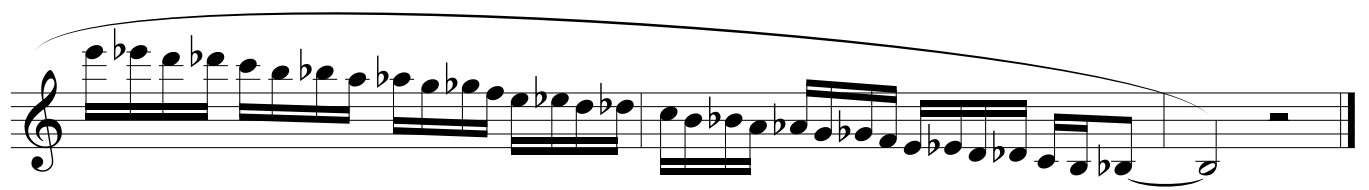


A musical staff in treble clef with a key signature of three sharps (G) and a common time signature (C). The scale starts on G and ascends to F, then descends back to G. The notes are: G, Ab, A, Bb, B, C, C#, D, Eb, E, F, F#, G. The scale is written in a single line with a slur over the entire range.

Chromatic Scale



A musical staff in treble clef with a key signature of one flat (Bb) and a common time signature (C). The scale is a full chromatic scale starting on Bb and ending on Bb. The notes are: Bb, B, C, C#, D, Eb, E, F, F#, G, Ab, A, Bb. The scale is written in a single line with a slur over the entire range.



A musical staff in treble clef with a key signature of one flat (Bb) and a common time signature (C). This staff continues the chromatic scale from the previous staff, starting on Bb and ending on Bb. The notes are: Bb, B, C, C#, D, Eb, E, F, F#, G, Ab, A, Bb. The scale is written in a single line with a slur over the entire range.

Tenor Sax

Region Band Scales

Region XIII - Fort Bend ISD

Bb Concert



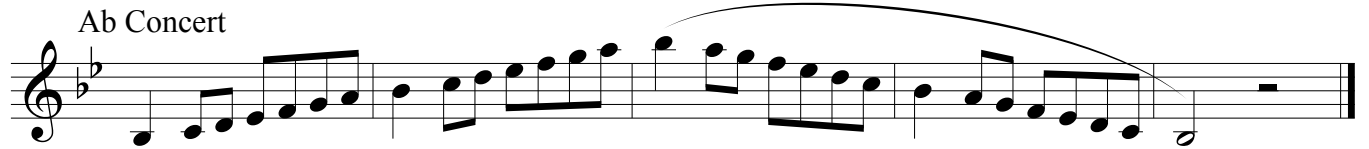
A musical staff in treble clef with a key signature of two flats (Bb) and a common time signature (C). The scale is written in eighth notes, starting on Bb and ascending to G, then descending back to Bb. A slur covers the entire scale.

Eb Concert



A musical staff in treble clef with a key signature of three flats (Eb) and a common time signature (C). The scale is written in eighth notes, starting on Eb and ascending to D, then descending back to Eb. A slur covers the entire scale.

Ab Concert



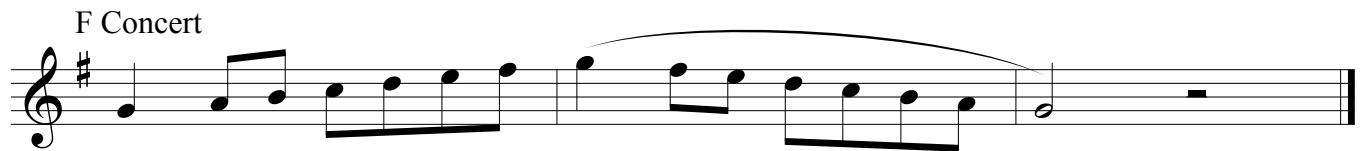
A musical staff in treble clef with a key signature of four flats (Ab) and a common time signature (C). The scale is written in eighth notes, starting on Ab and ascending to G, then descending back to Ab. A slur covers the entire scale.

Db Concert



A musical staff in treble clef with a key signature of five flats (Db) and a common time signature (C). The scale is written in eighth notes, starting on Db and ascending to C, then descending back to Db. A slur covers the entire scale.

F Concert



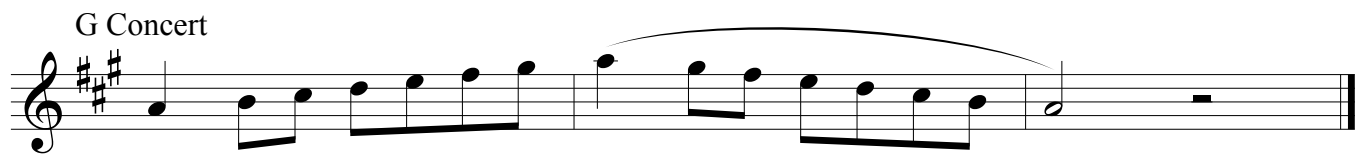
A musical staff in treble clef with a key signature of one sharp (F) and a common time signature (C). The scale is written in eighth notes, starting on F and ascending to E, then descending back to F. A slur covers the entire scale.

C Concert



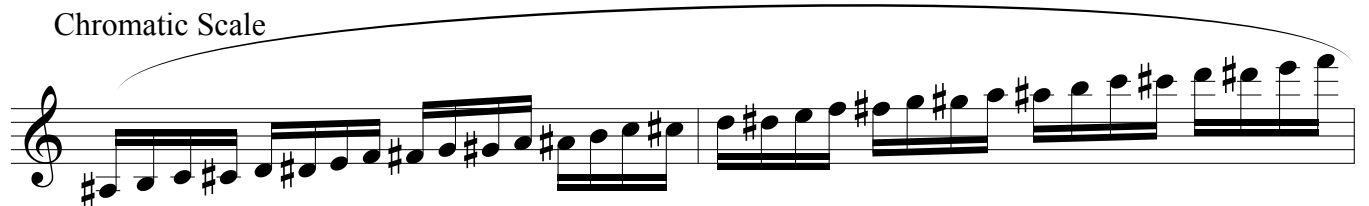
A musical staff in treble clef with a key signature of two sharps (C) and a common time signature (C). The scale is written in eighth notes, starting on C and ascending to B, then descending back to C. A slur covers the entire scale.

G Concert

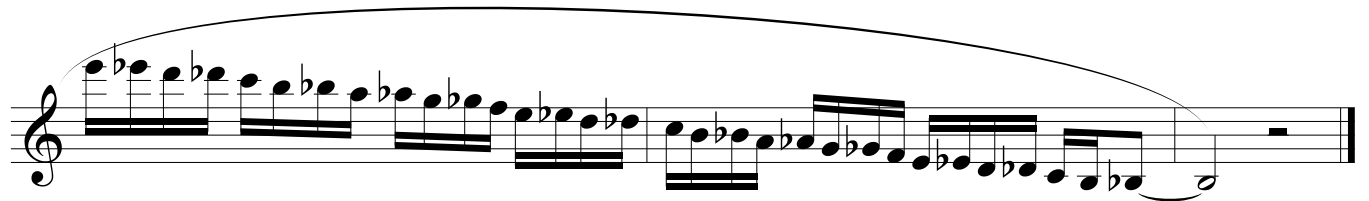


A musical staff in treble clef with a key signature of three sharps (G) and a common time signature (C). The scale is written in eighth notes, starting on G and ascending to F#, then descending back to G. A slur covers the entire scale.

Chromatic Scale



A musical staff in treble clef with a key signature of one sharp (C) and a common time signature (C). The scale is written in eighth notes, ascending chromatically from C to B. A slur covers the entire scale.



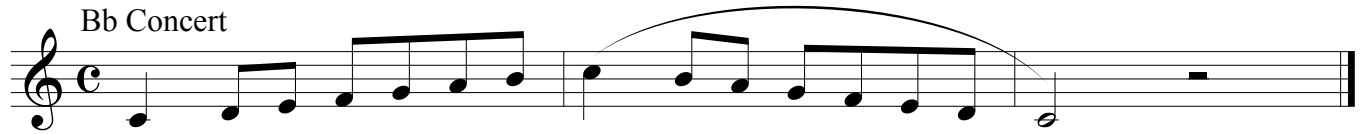
A musical staff in treble clef with a key signature of one sharp (C) and a common time signature (C). The scale is written in eighth notes, descending chromatically from B to C. A slur covers the entire scale.

Trumpet

Region Band Scales

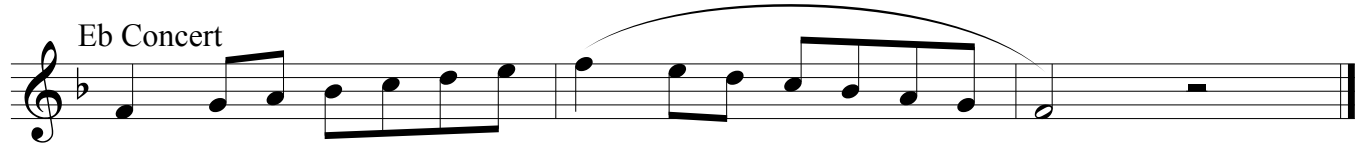
Region XIII - Fort Bend ISD

Bb Concert



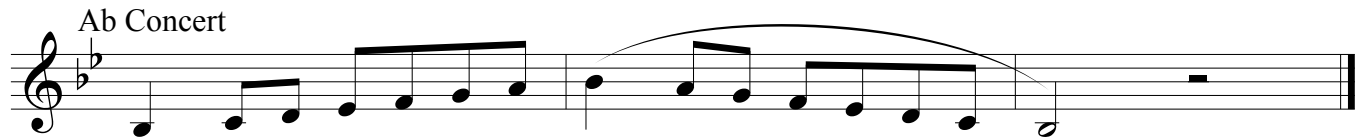
Musical staff for Bb Concert scale, starting on Bb and ascending to G.

Eb Concert



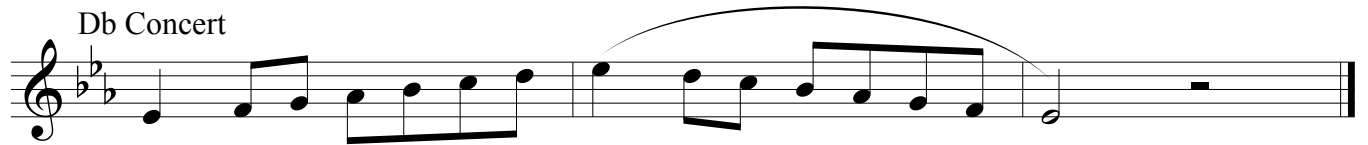
Musical staff for Eb Concert scale, starting on Eb and ascending to D.

Ab Concert



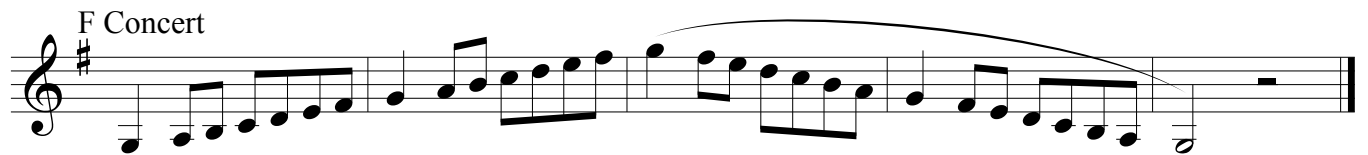
Musical staff for Ab Concert scale, starting on Ab and ascending to G.

Db Concert



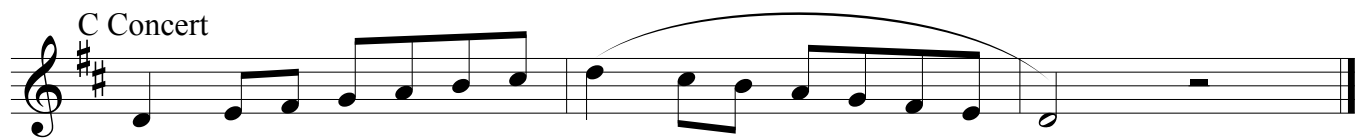
Musical staff for Db Concert scale, starting on Db and ascending to C.

F Concert



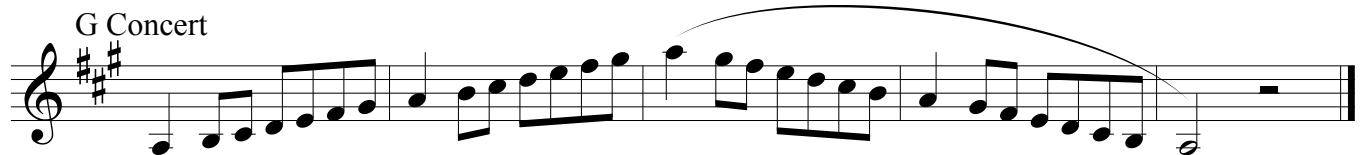
Musical staff for F Concert scale, starting on F and ascending to E.

C Concert



Musical staff for C Concert scale, starting on C and ascending to B.

G Concert

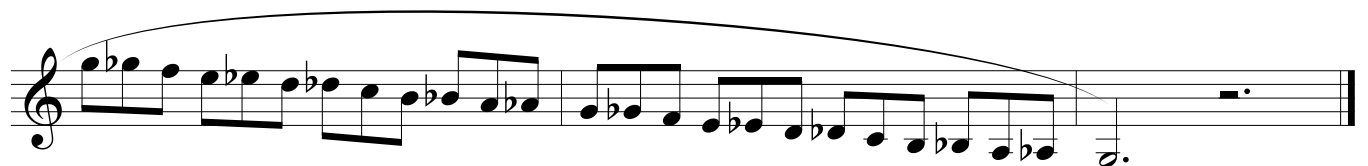


Musical staff for G Concert scale, starting on G and ascending to F#.

Chromatic Scale - Tongued or slurred, decided by the judges at the audition.



Musical staff for chromatic scale ascending, starting on C and ending on B.



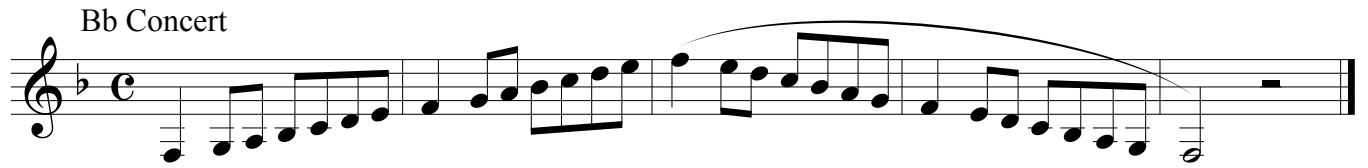
Musical staff for chromatic scale descending, starting on B and ending on C.

Horn

Region Band Scales

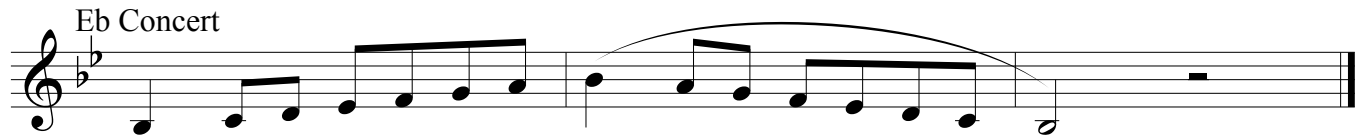
Region XIII - Fort Bend ISD

Bb Concert



A musical staff in treble clef with a key signature of two flats (Bb) and a common time signature (C). The scale starts on Bb and ascends chromatically to Bb, then descends chromatically back to Bb. The notes are: Bb, B, C, C#, D, Eb, E, F, F#, G, Ab, A, Bb.

Eb Concert



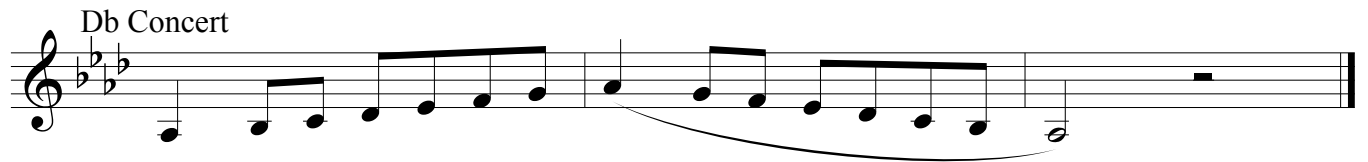
A musical staff in treble clef with a key signature of three flats (Eb) and a common time signature (C). The scale starts on Eb and ascends chromatically to Eb, then descends chromatically back to Eb. The notes are: Eb, E, F, F#, G, Ab, A, Bb, B, C, C#, D, Eb.

Ab Concert



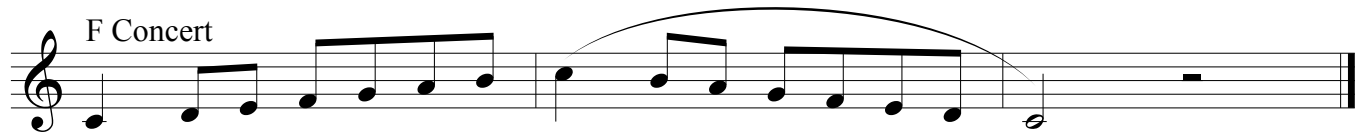
A musical staff in treble clef with a key signature of four flats (Ab) and a common time signature (C). The scale starts on Ab and ascends chromatically to Ab, then descends chromatically back to Ab. The notes are: Ab, A, Bb, B, C, C#, D, Eb, E, F, F#, G, Ab.

Db Concert



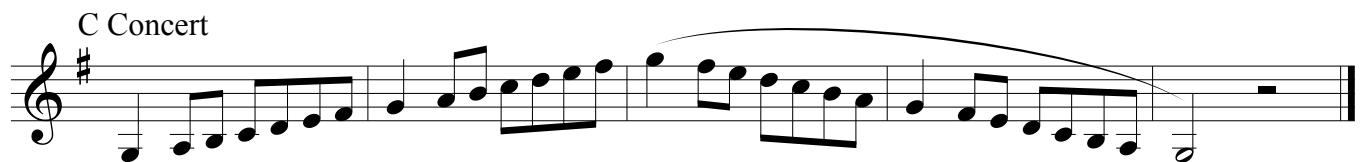
A musical staff in treble clef with a key signature of five flats (Db) and a common time signature (C). The scale starts on Db and ascends chromatically to Db, then descends chromatically back to Db. The notes are: Db, D, Eb, E, F, F#, G, Ab, A, Bb, B, C, C#, D, Db.

F Concert



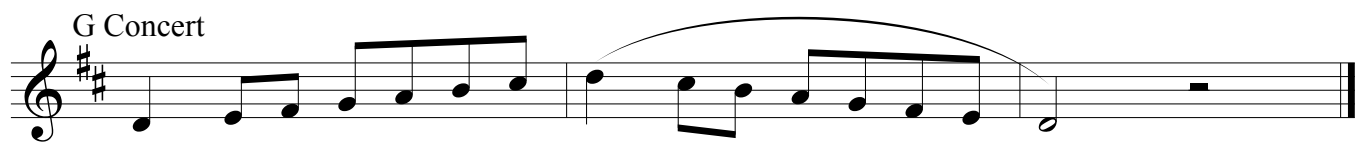
A musical staff in treble clef with a key signature of one flat (F) and a common time signature (C). The scale starts on F and ascends chromatically to F, then descends chromatically back to F. The notes are: F, F#, G, Ab, A, Bb, B, C, C#, D, Eb, E, F.

C Concert



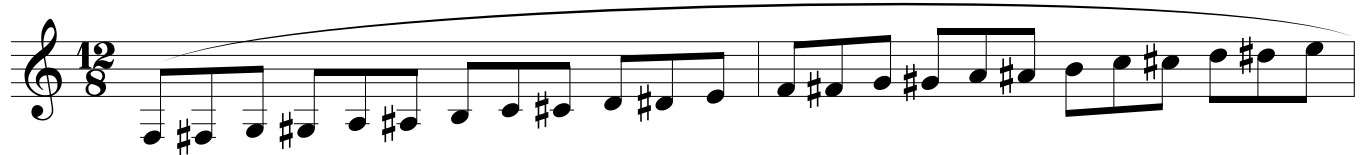
A musical staff in treble clef with a key signature of one sharp (C) and a common time signature (C). The scale starts on C and ascends chromatically to C, then descends chromatically back to C. The notes are: C, C#, D, Eb, E, F, F#, G, Ab, A, Bb, B, C.

G Concert



A musical staff in treble clef with a key signature of two sharps (G) and a common time signature (C). The scale starts on G and ascends chromatically to G, then descends chromatically back to G. The notes are: G, G#, Ab, A, Bb, B, C, C#, D, Eb, E, F, F#, G.

Chromatic Scale - Tongued or slurred, decided by the judges at the audition.



A musical staff in treble clef with a 12/8 time signature. It shows the ascending part of a chromatic scale starting on C. The notes are: C, C#, D, D#, E, E#, F, F#, G, G#, A, A#, B, B#.



A musical staff in treble clef with a 12/8 time signature. It shows the descending part of a chromatic scale starting on B. The notes are: B, Bb, Ab, G#, F#, E#, D#, C#, B, Bb, Ab, G#, F#, E#, D#, C#.

Trombone

Region Band Scales

Region XIII - Fort Bend ISD

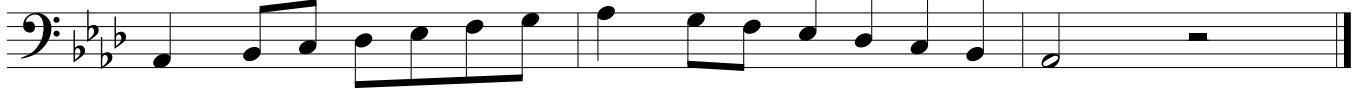
Bb Concert



Eb Concert



Ab Concert



Db Concert



F Concert



C Concert



G Concert



Chromatic Scale - Tongued or slurred, decided by the judges at the audition.



Euphonium

Region Band Scales

Region XIII - Fort Bend ISD

Bb Concert



Eb Concert



Ab Concert



Db Concert



F Concert



C Concert



G Concert



Chromatic Scale - Tongued or slurred, decided by the judges at the audition.



Mallets

Region Band Scales

Region XIII - Fort Bend ISD

Bb Concert

Musical notation for the Bb Concert scale, written in treble clef with a key signature of two flats (Bb and Eb) and a common time signature (C). The scale consists of eight measures: four ascending and four descending, each starting with a dynamic marking of *mf*.

Eb Concert

Musical notation for the Eb Concert scale, written in treble clef with a key signature of three flats (Bb, Eb, and Ab) and a common time signature (C). The scale consists of eight measures: four ascending and four descending, each starting with a dynamic marking of *mf*.

Ab Concert

Musical notation for the Ab Concert scale, written in treble clef with a key signature of four flats (Bb, Eb, Ab, and Db) and a common time signature (C). The scale consists of eight measures: four ascending and four descending, each starting with a dynamic marking of *mf*.

Db Concert

Musical notation for the Db Concert scale, written in treble clef with a key signature of five flats (Bb, Eb, Ab, Db, and Gb) and a common time signature (C). The scale consists of eight measures: four ascending and four descending, each starting with a dynamic marking of *mf*.

F Concert

Musical notation for the F Concert scale, written in treble clef with a key signature of one flat (Bb) and a common time signature (C). The scale consists of eight measures: four ascending and four descending, each starting with a dynamic marking of *mf*.

C Concert

Musical notation for the C Concert scale, written in treble clef with a key signature of no sharps or flats and a common time signature (C). The scale consists of eight measures: four ascending and four descending, each starting with a dynamic marking of *mf*.

G Concert

Musical notation for the G Concert scale, written in treble clef with a key signature of one sharp (F#) and a common time signature (C). The scale consists of eight measures: four ascending and four descending, each starting with a dynamic marking of *mf*.

Chromatic Scale

Musical notation for the Chromatic Scale, written in treble clef with a 12/8 time signature. The scale consists of two lines of four measures each, each starting with a dynamic marking of *mf*. The first line is an ascending chromatic scale, and the second line is a descending chromatic scale.

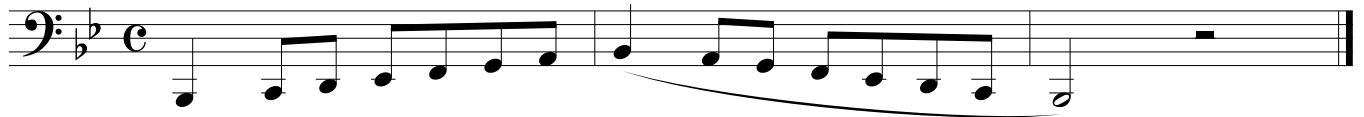
Musical notation for the descending chromatic scale, written in treble clef with a 12/8 time signature. The scale consists of four measures, each starting with a dynamic marking of *mf*.

Tuba

Region Band Scales

Region XIII - Fort Bend ISD

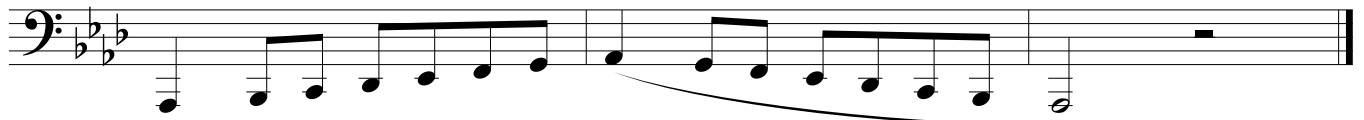
Bb Concert



Eb Concert



Ab Concert



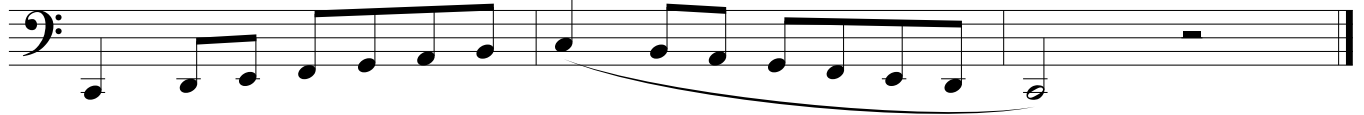
Db Concert



F Concert



C Concert



G Concert



Chromatic Scale - Tongued or slurred, decided by the judges at the audition.

